

Invicta 3 Distribution Board User Instructions

Your property has been equipped with a hager Distribution Board. This unit and its associated hager protective devices will offer the highest level of protection for your premises.

INV USER

A range of possible protective devices may be installed in your consumer unit, including Miniature Circuit Breakers (MCBs), Residual Current Circuit Breakers (RCCBs), or combined MCB/RCDs (RCBOs).

MCBs and fuses are safety devices designed to operate in the event that a circuit or appliance demands too much current.

RCCBs are also safety devices but are designed to protect against fault currents flowing to earth, and these reduce the risk of fire and electric shock. RCBOs combine the operation of both the MCB and RCCB. Access to the devices is by lifting the tinted door.

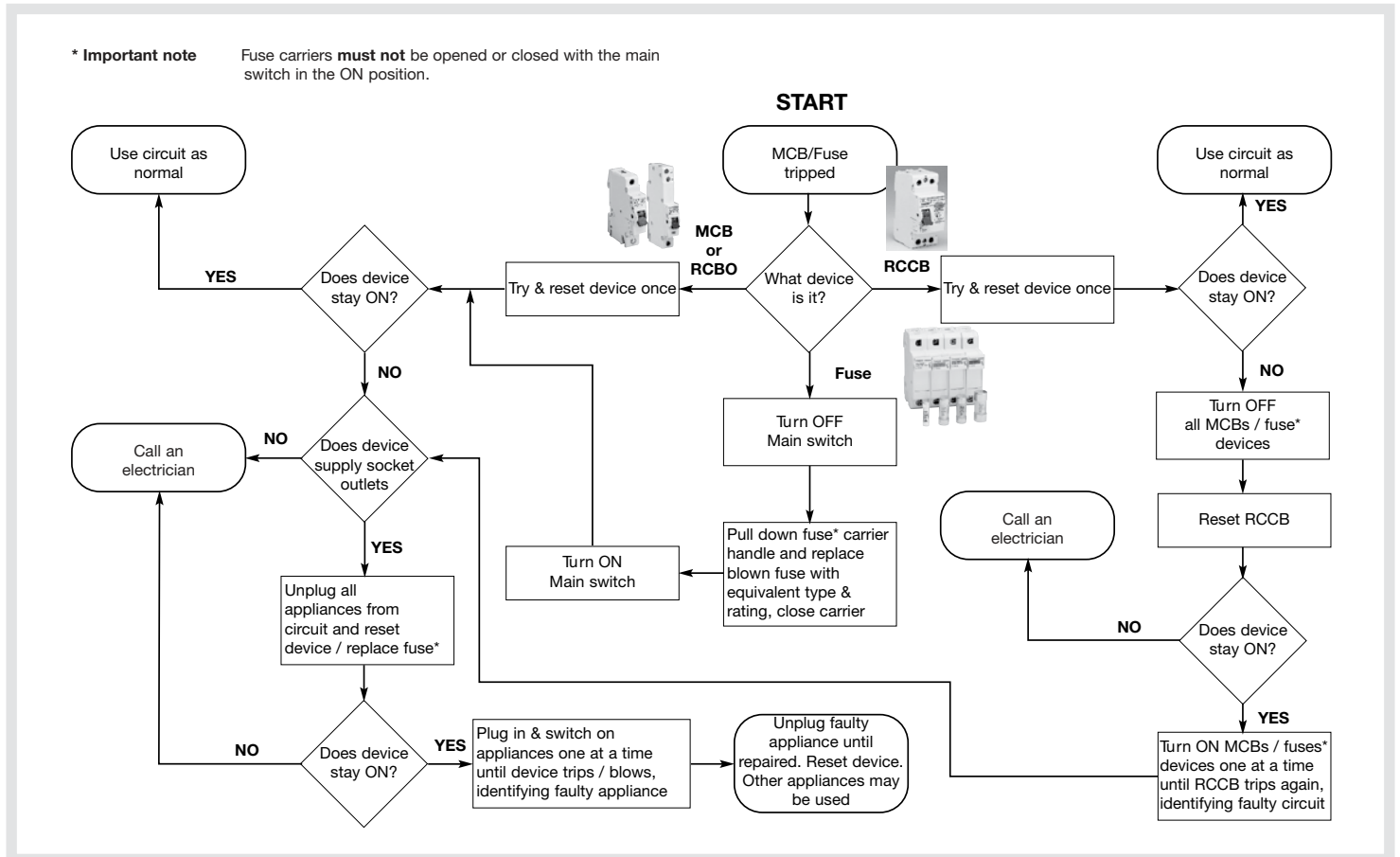
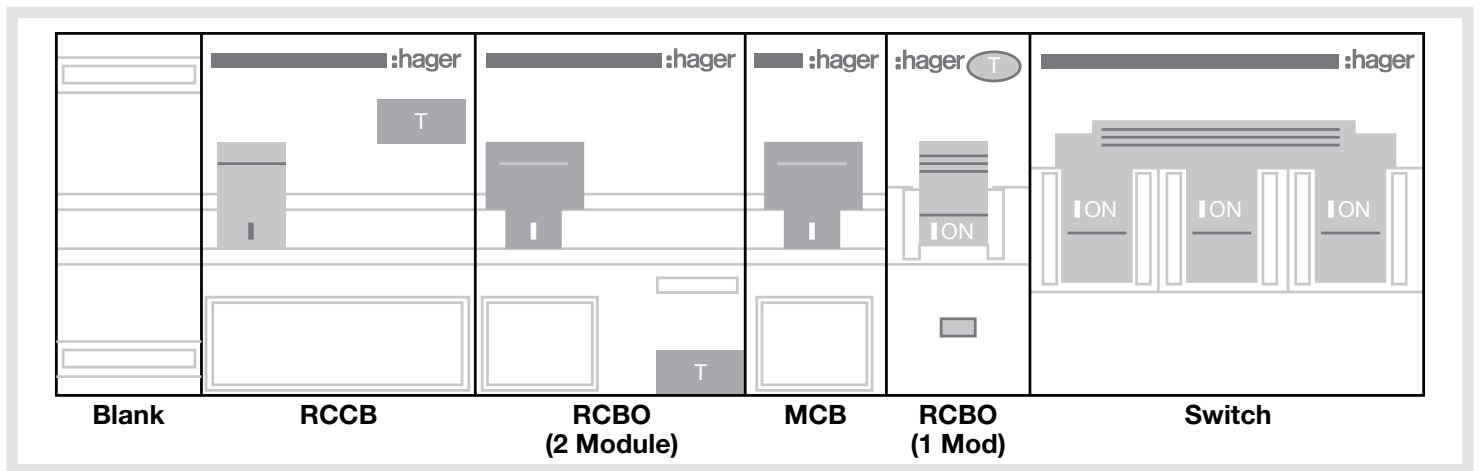
RCCBs and RCBOs should be tested every 3 months. Press the TEST or T button. The device should trip (go to the OFF position). If it trips, reset the device by pushing the toggle to the up (ON) position. If it does not trip call a qualified electrician.

ONLY QUALIFIED ELECTRICIANS SHOULD REMOVE THE FRONT COVER.

If any of the protective devices have tripped please follow the flow diagram below.

IF IN DOUBT ALWAYS CONSULT A QUALIFIED ELECTRICIAN.

HAGER TECHNICAL SUPPORT HELPLINE: 01952 675689.



INV USER